



south gippsland homes

Bennison 23

ASCENT

Designed around the large galley kitchen, the Bennison 23 offers spacious, comfortable living for the whole family.

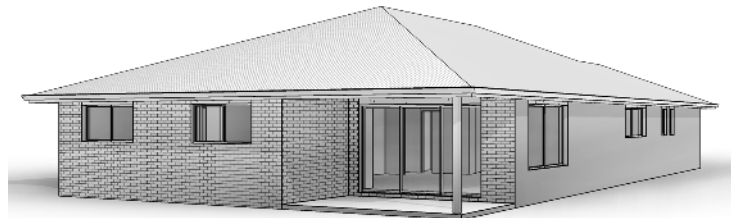


Exterior Length	19.56m
Exterior Width	12.10m
Total House Area	220.90m ²
Squares	23.78sq

Kitchen	4500mm x 2700mm
Dining	2880mm x 4340mm
Living	3740mm x 4560mm
Bed 1	3500mm x 3930mm
Bed 2	3000mm x 3370mm
Bed 3	3030mm x 3000mm
Bed 4	3300mm x 3000mm
Bath	1810mm x 2780mm
Alfresco	2400mm x 4430mm
Garage	6000mm x 6000mm



Standard Facade



Perspective 2