



south gippsland homes

Ellerside 24

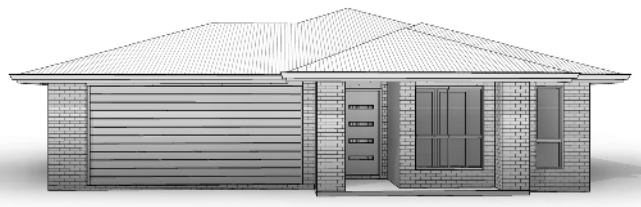
ASCENT

For those deep, narrow sites the Ellerside 24 is the perfect example of modern living at its best. Let the large central passage lead you right into the vast living space.



Exterior Length	22.66m
Exterior Width	11.89m
Total House Area	227.02m ²
Squares	24.44sq

Kitchen	3200mm x 5310mm
Dining	2800mm x 5310mm
Living	4000mm x 5310mm
Rumpus	3650mm x 3610mm
Bed 1	3600mm x 3700mm
Bed 2	3000mm x 3100mm
Bed 3	3000mm x 3090mm
Bed 4	3000mm x 3100mm
Bath	1910mm x 3100mm
Alfresco	3000mm x 3790mm
Garage	6000mm x 6000mm



Standard Facade



Perspective 2